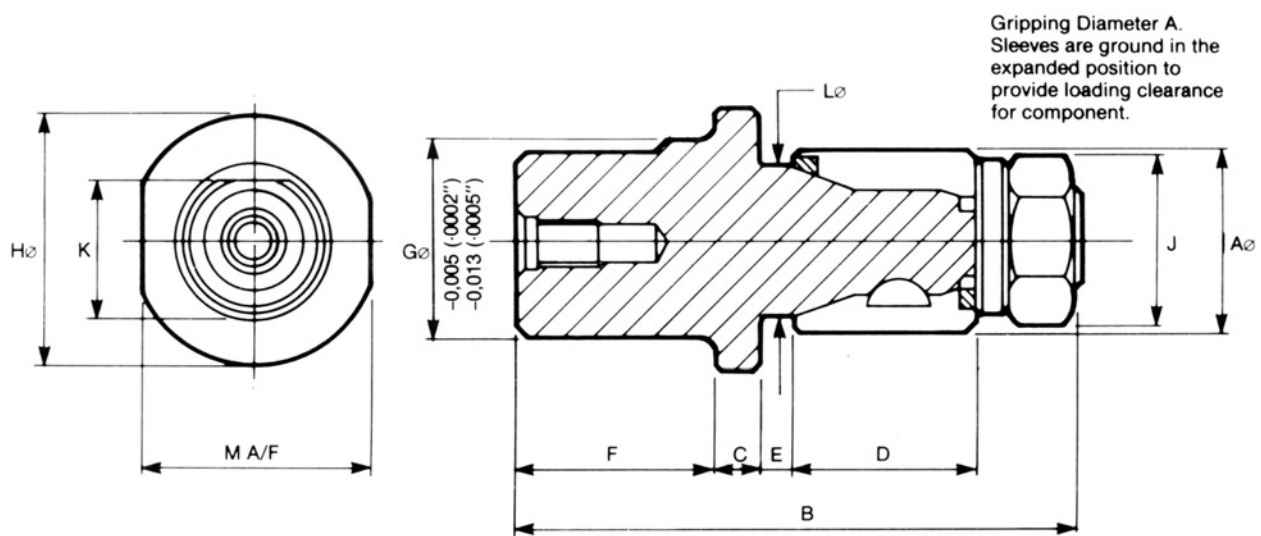
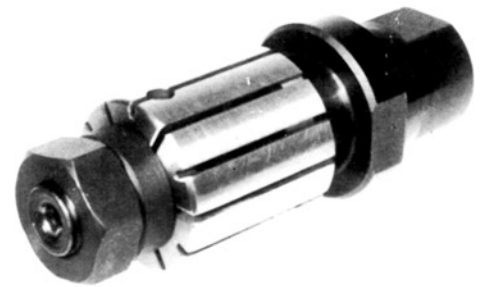


Standard Expanding Mandrels

Between Centres (standard length)



For maximum efficiency expanding sleeves must be preloaded to maintain contact with mandrel double angles at all times.

Model	A Range		B	C	D	E	F	G	H	J	K	L	M	Order by Tool No.
	Min	Max												
000	.500	.625	3.346	.433	.866	.394	.787	.787	1.024	.394	.709	.374	.866	2.000.90.3
	12,5	16,0	85,0	11,0	22,0	10,0	20,0	20,0	26,0	10,0	18,0	9,5	22,0	
050	.625	.875	3.543	.433	1.063	.354	.787	.787	1.024	.512	.709	.555	.866	2.050.90.3
	16,0	22,0	90,0	11,0	27,0	9,0	20,0	20,0	26,0	13,0	18,0	14,1	22,0	
100	.875	1.125	4.331	.433	1.260	.413	1.063	1.181	1.575	.748	1.063	.815	1.417	2.100.90.3
	22,0	28,5	110,0	11,0	32,0	10,5	27,0	30,0	40,0	19,0	27,0	20,7	36,0	
150	1.125	1.625	4.528	.433	1.496	.402	1.063	1.181	1.575	.945	1.063	1.035	1.417	2.150.90.3
	28,5	41,0	115,0	11,0	38,0	10,2	27,0	30,0	40,0	24,0	27,0	26,3	36,0	
200	1.625	2.50	4.921	.512	1.693	.394	1.063	1.181	1.969	1.417	1.063	1.457	1.811	2.200.90.3
	41,0	63,5	125,0	13,0	43,0	10,0	27,0	30,0	50,0	36,0	27,0	37,0	46,0	
250	2.50	3.00	6.496	.512	2.008	1.024	1.378	1.575	2.756	2.165	1.378	2.256	1.969	2.250.90.3
	63,5	76,2	165,0	13,0	51,0	26,0	35,0	40,0	70,0	55,0	35,0	57,3	50,0	
300	3.00	3.50	7.283	.591	2.244	1.024	1.378	1.969	3.346	2.559	1.772	2.799	2.362	2.300.90.3
	76,2	89,0	185,0	15,0	57,0	26,0	35,0	50,0	85,0	65,0	45,0	71,1	60,0	
350	3.50	5.125	9.055	.591	2.500	1.339	1.969	2.362	3.937	3.346	2.165	3.311	2.756	2.350.90.3
	89,0	130,0	230,0	15,0	63,5	34,0	50,0	60,0	100,0	85,0	55,0	84,1	70,0	
400	5.125	7.000	10.236	.591	3.130	2.165	1.969	3.150	5.512	4.882	2.874	4.846	4.134	2.400.90.3
	130,0	178,0	260,0	15,0	79,5	55,0	50,0	80,0	140,0	124,0	73,0	123,1	105,0	

THE NUT OPERATED BETWEEN CENTRES EXPANDING MANDREL IS USED BETWEEN 60° CENTRES, AND CAN BE DRIVEN FROM A DRIVE FLAT. THESE MANDRELS ARE GENERALLY USED FOR SMALL BATCH GRINDING OPERATIONS AND FOR INSPECTION.