



Fast chucks (hand chucks) with DIN-flange and cylindrical insert

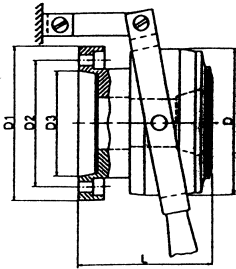


Figure 1

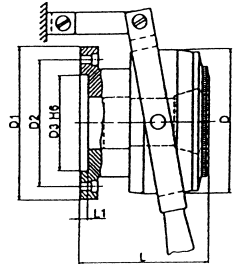


Figure 2

Design DIN-Flange (Figure 1)

| Order No. | Term | Flange DIN 55026+27 | Clamp. range in mm | for collets 1) |
|-----------|----------|------------------------|-----------------------|----------------|
| DSPF30A5 | SPF30-A5 | Size 5 | 2.0 – 30.0 | 163 E |
| DSPF40A5 | SPF40-A5 | Size 5 | 3.0 – 42.0 | 173 E |
| DSPF40A6 | SPF40-A6 | Size 6 | 3.0 – 42.0 | 173 E |
| DSPF60A6 | SPF60-A6 | Size 6 | 4.0 – 60.0 | 185 E |
| DSPF60A8 | SPF60-A8 | Size 8 | 4.0 – 60.0 | 185 E |

1) interchangeability with rubberflex-collets is ensured

Technical details

| Order No. | Term | Speed max. | D | D 1 | D 2 | D 3 | L |
|-----------|----------|---------------|-----|-----|-------|---------|-------|
| DSPF30A5 | SPF30-A5 | 4000 | 104 | 135 | 104.8 | 82.575 | 114.5 |
| DSPF40A5 | SPF40-A5 | 4000 | 129 | 135 | 104.8 | 82.575 | 119 |
| DSPF40A6 | SPF40-A6 | 4000 | 129 | 170 | 133.4 | 106.39 | 122 |
| DSPF60A6 | SPF60-A6 | 3000 | 154 | 170 | 133.4 | 106.39 | 140 |
| DSPF60A8 | SPF60-A8 | 3000 | 154 | 220 | 171.4 | 139.735 | 143 |

These chucks are delivered without spanner, retaining screws and counter retainer

Design with cylindrical insert (Figure 2)

| Order No. | Term | Chuck-flange in mm | Clamp. range in mm | for collets 1) |
|-----------|---------|-----------------------|-----------------------|----------------|
| DSPF16Z | SPF16-Z | cyl. ø 42 | 2.0-16.0 | 140 E |
| DSPF20Z | SPF20-Z | cyl. ø 54 | 2.0-24.0 | 148 E |
| DSPF30Z | SPF30-Z | cyl. ø 72 | 2.0-30.0 | 163 E |
| DSPF40Z | SPF40-Z | cyl. ø 88 | 3.0-42.0 | 173 E |
| DSPF60Z | SPF60-Z | cyl. ø 115 | 4.0-60.0 | 185 E |

1) interchangeability with rubberflex-collets is ensured

Technical details

| Order No. | Term | Speed max. | L 1 | D | D 1 | D 2 | D 3 H 6 |
|-----------|---------|---------------|-----|-----|-----|-----|---------|
| DSPF16Z | SPF16-Z | 6000 | 4 | 66 | 69 | 57 | 42 |
| DSPF20Z | SPF20-Z | 5000 | 4 | 85 | 88 | 74 | 54 |
| DSPF30Z | SPF30-Z | 4000 | 4 | 104 | 105 | 90 | 72 |
| DSPF40Z | SPF40-Z | 4000 | 4 | 129 | 122 | 107 | 88 |
| DSPF60Z | SPF60-Z | 3000 | 4 | 154 | 150 | 131 | 115 |

on request: – design with camlock-flange